



BERNAT® HORSESHOE CABLE BLANKET | KNIT



INTERMEDIATE

MEASUREMENTS

Approx 46" x 61" [117 x 155 cm].

GAUGE

11 sts and 14 rows = 4" [10 cm] in stocking st.

MATERIALS

| | | | |
|------------------------------|----------------------------------|-----------|---------------------------------|
| Bernat® Softee Chunky™ | (5.3 oz/150 g; 161 yds/147 m) | | (3.5 oz/100 g; 108 yds/99 m) |
| True Grey (03044) or (28044) | 9 balls | OR | 14 balls |

Size U.S. 11 (8 mm) circular knitting needle 29" [75 cm] long **or size needed to obtain gauge.** Cable needle.

ABBREVIATIONS: www.yarnspirations.com/abbreviations

2tog = Work next 2 stitches together

Approx = Approximate(ly)

Beg = Beginning

Cont = Continue(ity)

C8B = Slip next 4 stitches onto cable needle and leave at back of work. K4, then K4 from cable needle.

C8F = Slip next 4 stitches onto cable needle and leave at front of work. K4, then K4 from cable needle.

K = Knit

M1 = Make 1 stitch by picking up horizontal loop lying before next stitch and knitting into back of loop.



P = Purl

Pat = Pattern

Rep = Repeat

RS = Right side

St(s) = Stitch(es)

WS = Wrong side

INSTRUCTIONS

Cable Panel (worked over 32 sts). See Chart.

1st row: (RS). P2. K2. P4. K4. P3. K2. P3. K4. P4. K2. P2.

2nd row: K2. P2. K4. P4. K3. P2. K3. P4. K4. P2. K2.

3rd row: (K2. P2) twice. K4. P3. K2. P3. K4. (P2. K2) twice.

4th row: (P2. K2) twice. P4. K3. P2. K3. P4. (K2. P2) twice.

5th to 8th rows: As 1st to 4th rows.

9th and 10th rows: As 1st and 2nd rows.

11th row: (K2. P2) twice. C8F. C8B. (P2. K2) twice.

12th row: (P2. K2) twice. P16. (K2. P2) twice.

These 12 rows form Cable Panel.

Cast on 138 sts. **Do not** join. *Working back and forth across needle in rows*, proceed as follows:

1st row: (RS). K4. *P2. K2. Rep from * to last 2 sts. K2.

2nd row: *K2. P2. Rep from * to last 2 sts. K2.

Rep last 2 rows (K2. P2) ribbing with garter edges for 4" [10 cm], ending on a 1st row.

Next row: (WS). K2. (Rib 10 sts. M1) twice. Rib 42 sts. (M1. Rib 10 sts) twice. Rib 32 sts. (M1. Rib 10 sts) twice. K2. 144 sts.

Proceed in pat as follows:

1st row: (RS). K2. *Work 1st row Cable Panel. P2. (K2. P2) 5 times. Rep from * once more. Work 1st row Cable Panel. K2.

2nd row: K2. *Work 2nd row Cable Panel. K2. (P2. K2) 5 times. Rep from * once more. Work 2nd row Cable Panel. K2.

These 2 rows form ribbing between Cable Panels. Cable Panels are now in position.

Cont in pat until work from beg measures approx 57" [144.5 cm], ending on a 9th row of Cable Panel Pat.

Next row: (WS). Pat 12 sts. *(Work 2tog. Pat 9 sts) twice. Pat 32 sts. Rep from * once more. (Work 2tog. Pat 9 sts) twice. Pat to end of row. 138 sts.

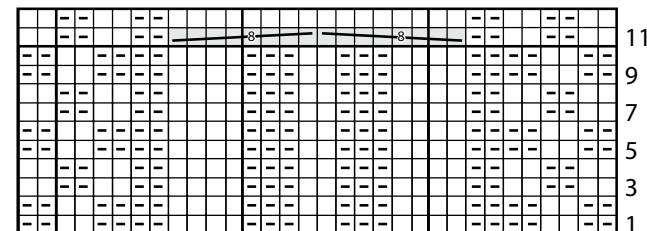
1st row: (RS). K4. *P2. K2. Rep from * to last 2 sts. K2.

2nd row: *K2. P2. Rep from * to last 2 sts. K2.

Rep last 2 rows for 4" [10 cm], ending on a 2nd row.

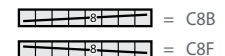
Cast off in ribbing.

Cable Panel



Key

- = Knit on RS rows.
- = Purl on WS rows.
- = Purl on RS rows.
- = Knit on WS rows.



Start Here